

RAMPA Tec Inc.



RAMPA[®]
INSERTS - SCREWS

RAMPA[®]
INSERTS - SCREWS



Fastening System- Inserts

- Increased demand from a wide variety of manufacturers for RTA, flat packing options.
- Opens up new market opportunities with cost effective shipping options to remote/farther markets
- Ability to flat pack products resulting in substantial savings vs. shipping fully assembled (don't pay to ship air)
- Flat packing options offer ability to better package/protect your products resulting in reduction of damages/claims

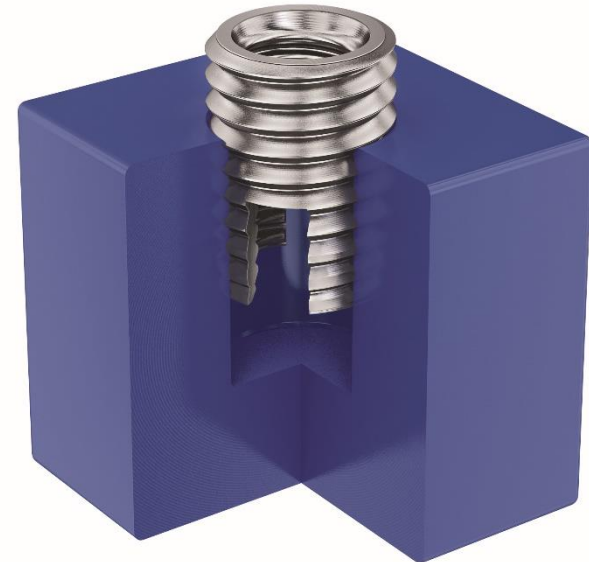
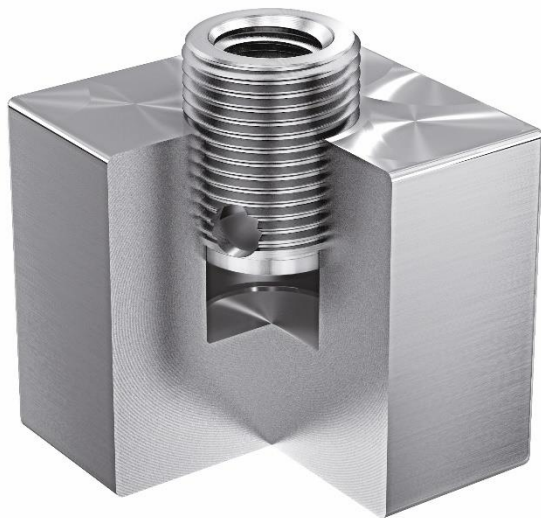


Fastening Systems-Inserts

- Increased demand for broader and better fastener options
- For a variety of substrates
- Combination of substrates being connected
- Easier to install, tooling options
- Confidence that final product installations will have solid, more durable long lasting connections
- Ability to easily assemble on-site



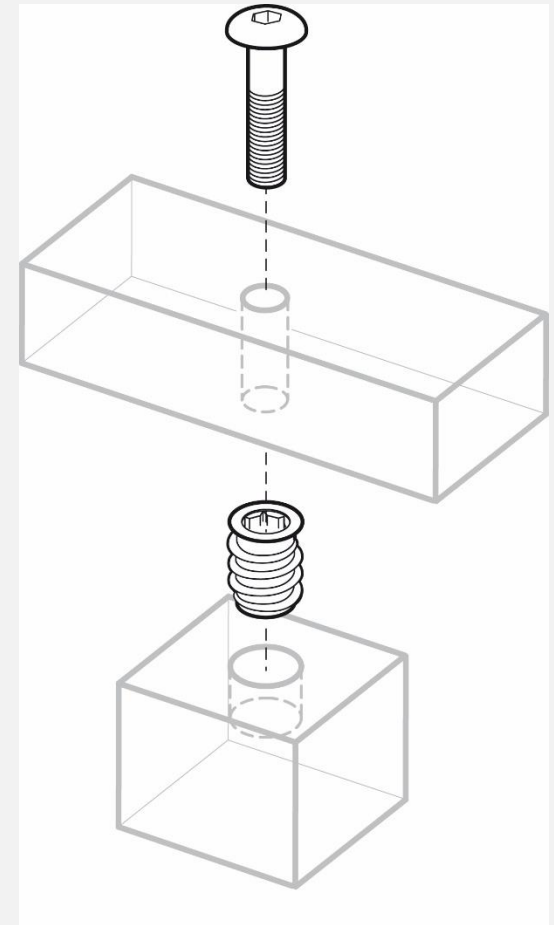
Threaded Inserts





Threaded Inserts

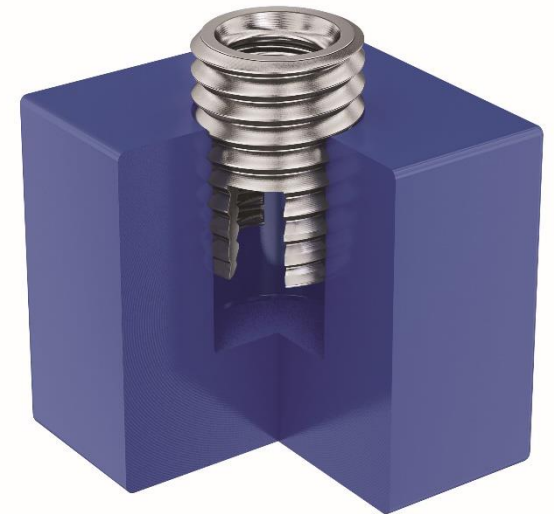
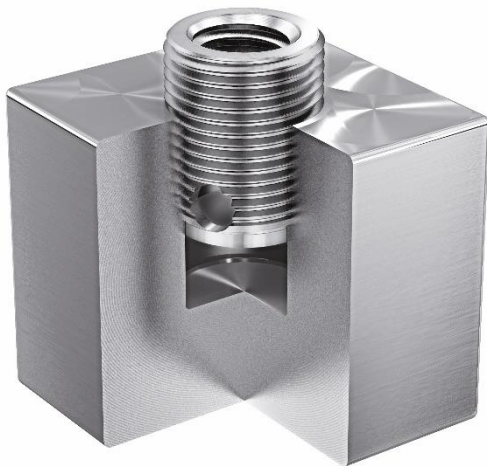
- Screwed into substrate locking itself into material creating a long-lasting bond.
- Provide permanent, wear resistant threads.
- Improve the strength of connections thus increasing load-bearing capabilities
- Allow for some or all of connections to be hidden as well as being easily assembled numerous times while maintaining superior connection strength





Threaded Inserts

- Wide variety of styles and options available in the market but not always known
- Options available by substrate, finish, material thickness etc..
- Technical data and tooling options available





Die-Cast Inserts

- Very common inexpensive inserts.
- These inserts are mass produced in die-cast molds with a tapered design and fin style external thread.
- Due to this design die-cast inserts provide inferior holding power and can loosen and also press or bubble substrate.
- They can be used in applications for softer woods where durability/strength is not required.





Machined Inserts

Vs. Die Cast inserts offer;

- Solid cylindrical metal bushing providing superior strength and durability
- High quality wear resistant threads
- Coarse continuous external cutting thread
- Dimensional stability
- Range of finishes available- stainless, brass etc..



Slot Drive Inserts

Slotted inserts for wood

- RAMPA invented the original threaded insert DIN 7965 which is still quite common today
- Solid metal bushing provides superior strength and durability
- Continuous coarse wide external thread best suited for use in soft to medium density materials





Slot Drive Tooling

Driver Type 507

For use with slotted inserts.

Designed and engineered as
enhancement over flat
head screwdriver

Provides greater driving stability
and quicker installation





SK INSERT LINE

- Enhancements including;
 - slimmer external thread providing sharper cutting function for better use in medium & hardwoods
 - hex drive socket for ease of installation
 - unthreaded lead reduces tilting





SKD330

- RAMPA's newest patented insert has 3 external threads
- eliminates tilting, providing perfectly straight installation everytime
- increases installation speed by up to 2.5 times
- provides superior holding power in all wood materials



SKD330_hardwood.xps

“one insert for all wood applications”



Harder Substrates

Plastics, Metals, Corian etc..

- Extremely narrow continuous external thread
- Conical lead with cutting slots for superior self cutting function





Tooling...

Driver Type 515

- With Ball Bearing and shank
- Specifically engineered to speed up insertion process and reduce friction.
- Provides superior stability and driving force with all inserts
- Tool stud threaded into internal thread.
- Can be used with most drills
- Can be used with all types of inserts





Tooling...

Semi- Automated Insert Machine

- faster processing speed
- repeatable quality level
- perpendicular assembly
- quick angle adjustment and tool exchange
- constant screw-in depth by optical or mechanical depth stop sensor
- with automatic reverse drive

RAMPA Tec Inc.



RAMPA[®]
INSERTS - SCREWS

RAMPA[®]

INSERTS - SCREWS

Thanks for your time

For more information please visit us at Booth #1048

Or visit our website www.rampa.com

By email rampatec@rampa.com

By phone 1-855-RAMPA-4U (726-7248)