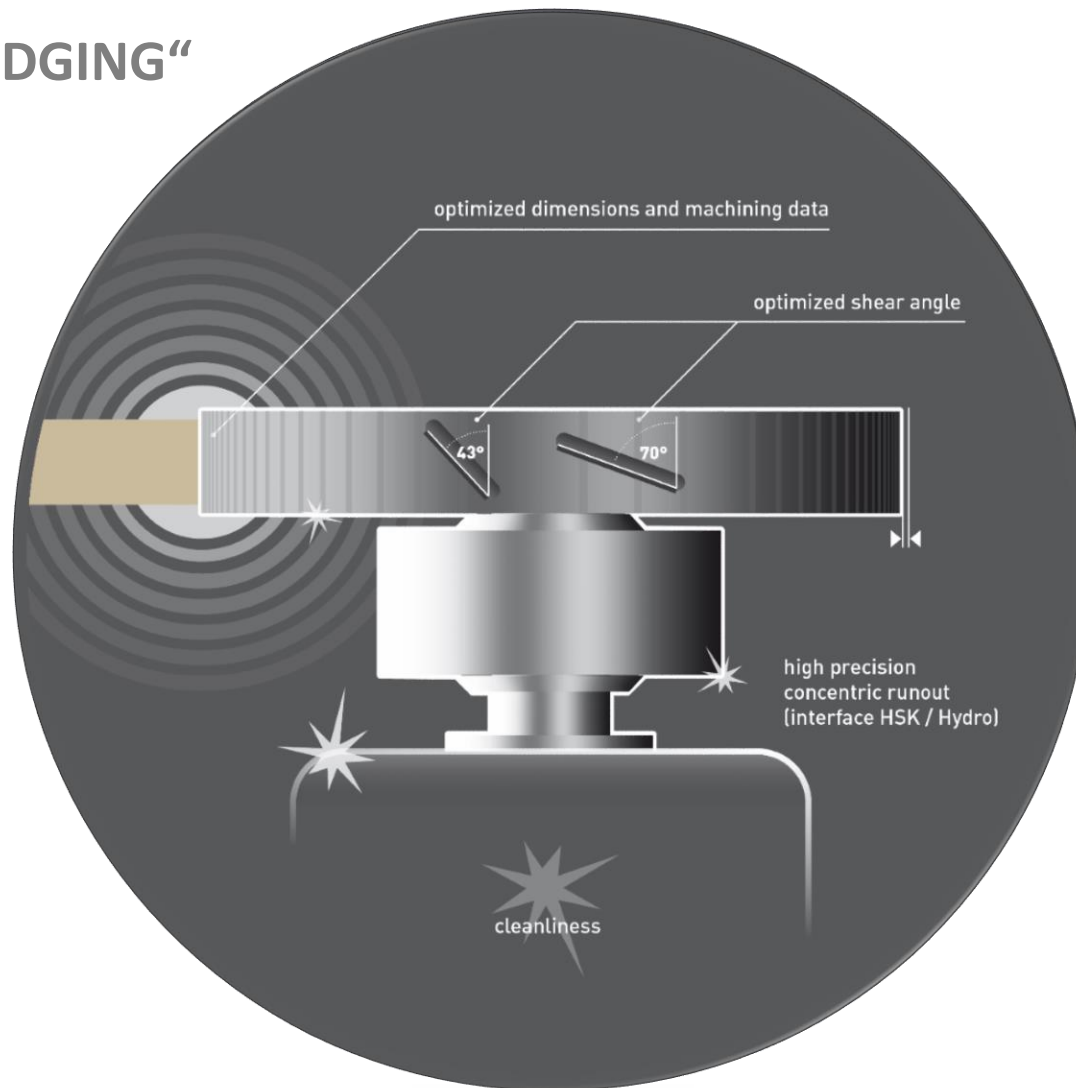


ZERO-JOINT HIGH-END EDGING

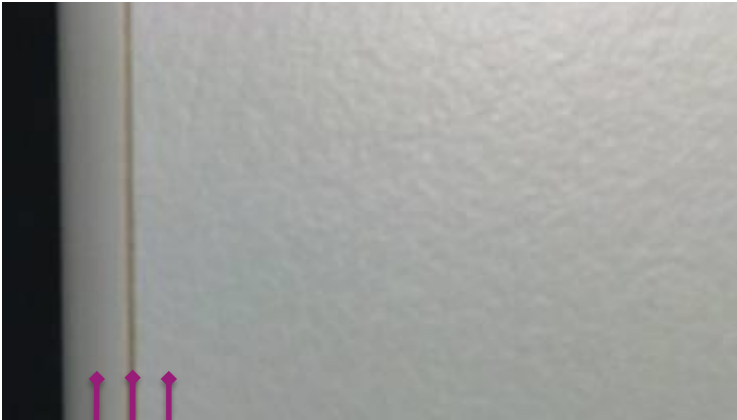
APPLICATION

“HIGH-END EDGING”



CUSTOMER REQUIREMENT - HIGH-END EDGING

conventional:



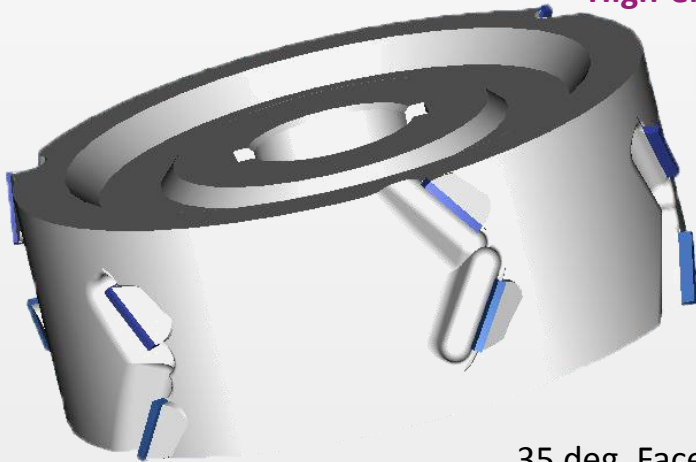
workpiece
glue joint
edge



- optically high-quality furniture
- sophisticated design
- high heat stability
- water and steam resistant
- abrasion resistance

➤ **DIAMAX**

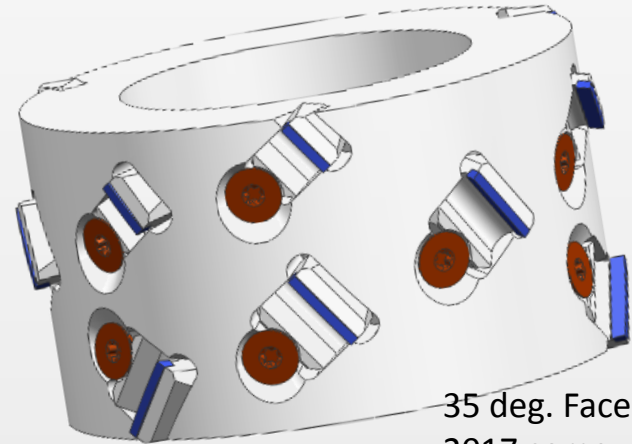
Not ideal for
High-end-edge



35 deg. Face shear

➤ **SMART JOINTER**

Not ideal for
High-end-edge



35 deg. Face shear
2017 some with 43 deg.

➤ **DIAREX**

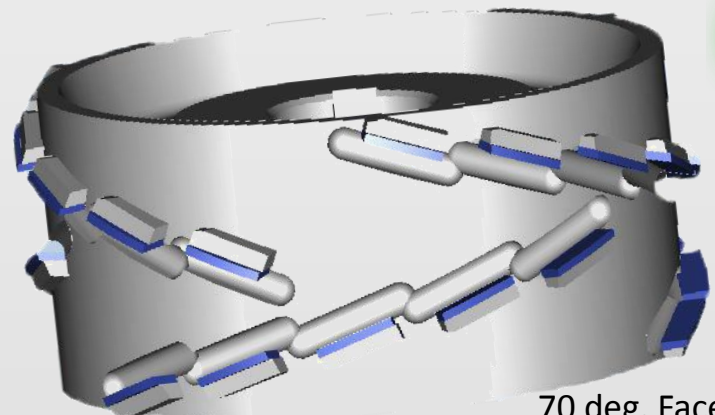
Suitable for
High-end-edge



43 deg. Face shear

➤ **P-SYSTEM**

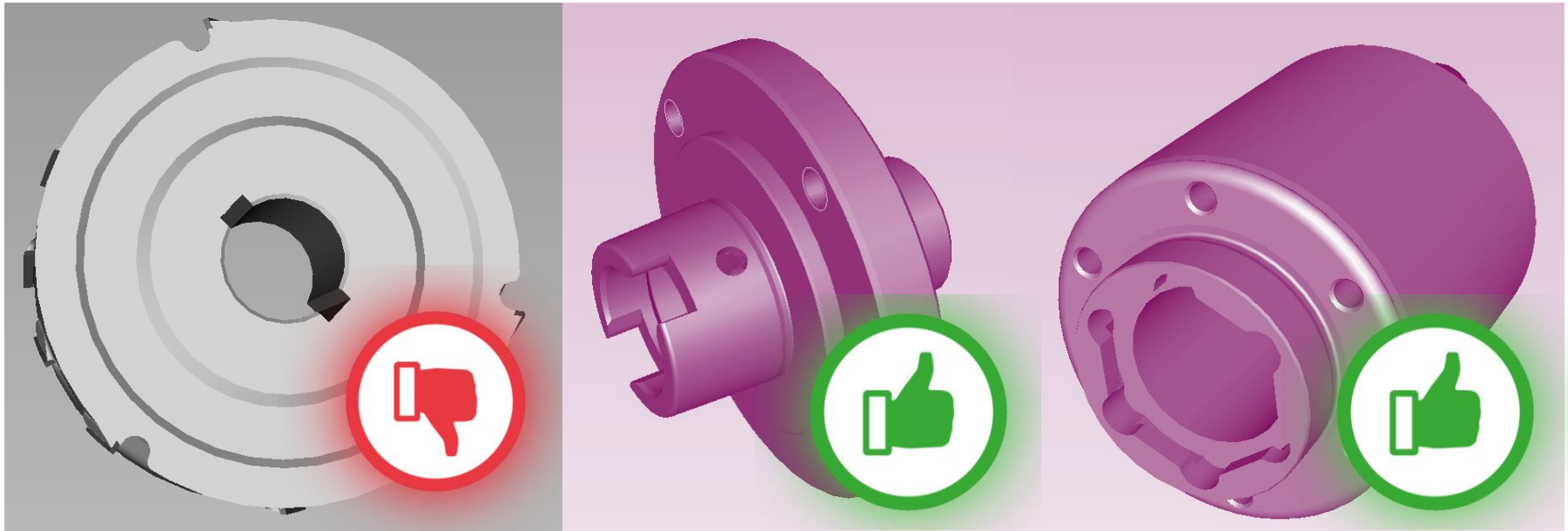
Suitable for
High-end-edge



70 deg. Face shear

TOOL CLAMPING OPTIONS:

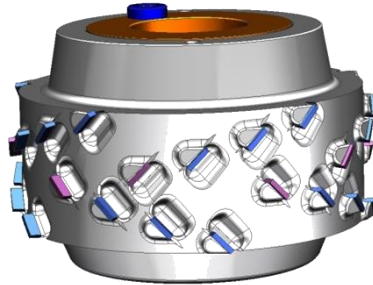
- Generally, it is recommended to use Hydro or HSK as interface for tool clamping. In this way, the most precise concentricity can be achieved.
- Tools with double keyway are typically not recommended due to poor concentricity tolerances



RECOMMENDED JOINTING CUTTERHEADS :

- In general, standard jointing tools with face shear angles less than 43 deg. are not recommended for High-End edging technology. This is due to the very high level of cut quality required.
- The material edge also needs to be flat. Cutterheads with a crown are not recommended.
- ***Recommended Jointing Cutter Versions for „High-End Edging“:***

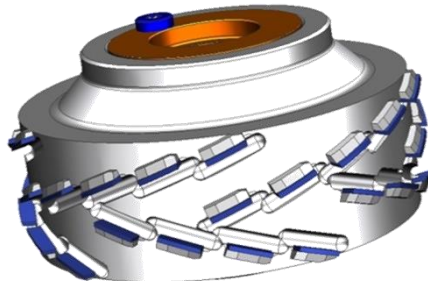
- *Universal:*



Diarex Jointing Cutter

- > shear angle 43°
- > resharpening area 3mm
- > low noise level
- > optimized chip removal

- *Premium:*



P-System Jointing Cutter

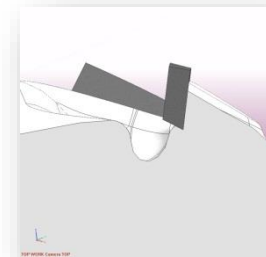
- > shear angle 70°
- > resharpening area 4mm
- > very long edgelife
- > for difficult laminates

DIAREX JOINTING CUTTER

- 43° axial-angle for best finish-quality
- Cutting length 8,5 mm results in best quality in particleboard with loosely compressed middle layer.
- resharpening area 3 mm / resharpenable up to 8 times
- LowNoise Design
- CM Design for optimized chip evacuation



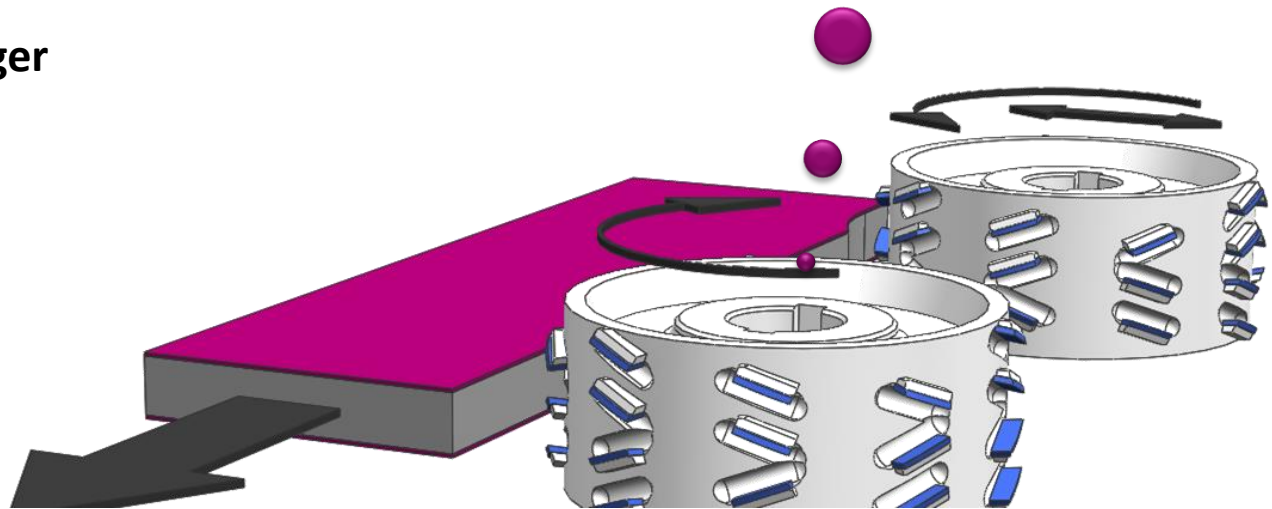
TFR-ISO WORK Camera TFR-ISO



P-SYSTEM JOINTING CUTTER

- Especially when cutting difficult laminates
- Low cutting force in direction of feed
- Very high compression shear
- Normally edgelife is longer

70 Degree Face shear
P-System tooling for
HIGH-END EDGING





LEUCO DIALOG
you're part of it. welcome!

ON
TOUR

INNOVATIV – RICHTUNGSWEISEND – ZUVERLÄSSIG

Ledermann GmbH & Co. KG
Willi-Ledermann-Str. 1
72160 Horb
T +49 (0)7451 / 93-0
F +49 (0)7451 / 93-270
www.leuco.com

LEUCO